



1ST

International Conference on Sustainable Construction and the Built Environment (ICSCBE)

6-9 July 2025 | 8H00 TO 17H00

Theme: The Future of the Built Environment in Developing Countries

Venue: WSU Buffalo City Campus: Conference Potsdam Site

.....
PROGRAMME



1ST INTERNATIONAL CONFERENCE ON SUSTAINABLE CONSTRUCTION IN THE BUILT ENVIRONMENT (ICSCBE)

PURPOSE

To appraise you about the upcoming inaugural International Conference on Sustainable Construction in the Built Environment (ICSCBE) hosted by the Council for the Built Environment in collaboration with the Walter Sisulu University scheduled for 6 - 9 July 2025 under the theme “The Future of the Built Environment in Developing Countries” at the WSU’s Buffalo City Campus, in East London, Eastern Cape.

 Date: **6 - 9 July 2025**

 Venue: Conference
Walter Sisulu University’s Buffalo City Campus

 Venue: Gala Dinner
East London International Convention Centre (ICC)
08 July 2025

ORDER OF PROCEEDINGS

PRE-CONFERENCE PROGRAMME

Programme Director: Dr Ehrhard Visser | CBE Senior Manager Programmes



DAY 1: 06 July 2025 | 12h30 - 19h00

Time Slot	Topic	Speaker
12H30-13H30	Registration	
13h30-13h40	Opening Ceremony and Welcome Address	Prof DW Thwala WSU Executive Dean FEBEIT
13h45-16h00	Sustainability Workshop	Ms M Nethengwe Sustainability Institute Reserach and Advisory
16h10-17h30	Grant Funding Workshop	Prof EM Mwanaumo University of Zambia Director R&D
17h30-17h45	Break	
17h45-19h00	Workshop Dinner	



DAY 2: 07 July 2025 | 07h30 - 16h00

CONFERENCE PROGRAMME

Programme Director: Dr Mpume Mkhize | UJ Director Transformation

Time Slot	Topic	Speaker
07h30-08h55	Registration	
08h55-09h00	Health & Safety	Ms Z Ntsabo
09h00-09h05	Prayer - Benediction	WSU Faculty Member
09h05-09h20	Opening Ceremony	Prof RS Songca WSU VC & Principal
09h20-09h40	Welcome Address	Prof DW Thwala WSU Executive Dean FEBEIT
09h40-09h50	Message of Support and Introduction of the MEC	Ms Amelia Mtshali CBE Chairperson
09h50-10h30	Address by the EC MEC of Public Works, Infrastructure and Human Settlements	Hon. Siphokazi Lusithi (MPL) MEC of PWIH

10h30 - 11h00 | TEA BREAK



11h00 - 12h00 AI for Worker Safety: Impact on Worker Behaviour

Prof DJ Edwards | BCU Director of Centre for Business Innovation and Enterprise (UK)



BREAKAWAY SESSION ONE



VENUE A

Professor NX Mashwama | Session Moderator

QUALITY AND SAFETY IN ENGINEERING & BUILT ENVIRONMENT

12H00 – 12H15

Unathi Thango
(Eskom)

A novel approach to implementing lean manufacturing concepts in the South African construction sector

12H15 – 12H30

Monwabisi Siwakhile
(Mancosa)

The efficiency of the Housing White Paper on the Housing Crisis in South Africa: A systematic literature review

12H30 – 12H45

Mogashoa Boitumelo
(University of Johannesburg)

The Role of Construction Project Management in Achieving Sustainable Housing Development in South Africa

12H45 – 13H00

Akinradewo Opeoluwa
(UFS)

Adoption of Sensing and Warning-Based Technologies for Enhancing Occupational Health and Safety in Civil Engineering Projects

13H00 – 13H15

Stephen Akunyumu
(Kwame Nkrumah University of Science and Technology)

An Assessment of The Use of Exculpatory Clauses for Risk Allocation in Standard Contract Documents in Ghana.

VENUE B

Dr Hashe | Session Moderator

DIGITALIZATION AND EMERGING TECHNOLOGIES IN ENGINEERING AND BUILT ENVIRONMENT

12H00 – 12H15

Themba Mashiyane
(Eskom)

A Systematic Review on document management systems in facility management: tools for improved efficiency

12H15 – 12H30

Eric Kwame Simpeh;
Tinashe Lewis Gwangwari and
(Cape Peninsula University of Technology; Kwame Nkrumah University of Science and Technology)

Factors hindering the adoption of Building Information Modelling in projects in South Africa

12H30 – 12H45

Sibukele Gumbo
(Walter Sisulu University)

Fourth Industrial Revolution (4IR) Skills Development in Higher Education Institutions (HEIs): A Journey through Three Eras

12H45 – 13H00

Ayobami Oluwaseun Idowu;
(Cliton Aigbavboa , Ayodeji Emmanuel Oke, Douglas Aghimien & Love Opeyemi David)
(UJ; Federal University of Technology Nigeria)

Application Of Artificial Intelligence in Green Retrofitting of Existing Buildings In South Africa

13H00 – 13H15

Sidumisile Sipiwe
Siziba
(UJ)

Assessing the level of acceptance on the use of digital technology within the South African Construction Industry and other countries

VENUE C

Dr M Liphadzi | Session Moderator

ENGINEERING AND BUILT ENVIRONMENT EDUCATION AND TRAINING

12H00 – 12H15

Thabo Khafiso;
(Sekoele Morris Ramajoe; Sibongile Phiri)
(UJ; CUT; School of Engineering Lesotho)

Academic challenges encountered by engineering students in South African colleges: A Case study in Motheo TVET College

12H15 – 12H30

Zungu Zamageda
(WITS)

Leveraging Non-Technical Skills to Address Challenges in BIM-Driven Construction Projects in South Africa

12H30 – 12H45

K'homotho Nester Mokhojane;
and Thabo Khafiso

Central University of Technology)

Leveraging on the nexus of digital technologies by integrating Artificial Intelligence (AI) for unlocking brownfield project delays: A review

12H45 – 13H00

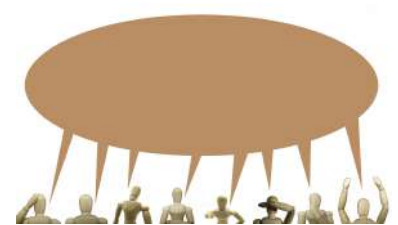
Olusegun Aanuoluwapo Oguntona
(Walter Sisulu University)

Building Mental Resilience for Construction 5.0 Uptake: Strategies for Workers in Developing Countries

13H00 – 13H15

Mbulelo Phesa
(Walter Sisulu University)

Evaluating the Impact of COVID-19 on the Effectiveness of Civil Engineering Work Integrated Learning Management in a South African University



BREAKAWAY SESSION ONE



VENUE D

Prof E Bamfo-Agyei | Session Moderator

PROFESSIONALISM, ETHICS & DIGITALIZATION

12H00 – 12H15	12H15 – 12H30	12H30 – 12H45	12H45 – 13H00	13H00 – 13H15
<p>Frank Amoah; (Ernest Kissi; Michel Adesi; De-Graft Owusu-Manu)</p> <p>(Kumasi Ghana; UJ)</p> <p>Exploring Construction Business Risks, Sources, and the Impact of Sustainable Corporate Social Responsibility: Systematic Review</p>	<p>Nathaniel Sawyerr (Walter Sisulu University)</p> <p>Maintaining Technical Expertise in Government Roles- A South African Case Study</p>	<p>Themba Lukhele (University of Mpumalanga)</p> <p>Understanding the Role of Stakeholder Engagement in the Realisation of Ethical Project Governance: Utilitarianism Perspective.</p>	<p>Womotimi Allen Ekubo; Murendeni Liphadzi; Cliton o Aigbavboa (University of Johannesburg)</p> <p>Exploring the impact of virtual reality on facility management in the South African construction industry: A project case study</p>	<p>Ncube Prince Daughin Ngqabutho (Walter Sisulu University)</p> <p>Transforming Campus Wayfinding with 4IR Technologies: The NaviWSU Solution</p>

VENUE E

Mr S Dywili | Session Moderator

SUSTAINABILITY

12H00 – 12H15	12H15 – 12H30	12H30 – 12H45	12H45 – 13H00
<p>Aliu Ukpoireghe; (Misheck Musalgwa; Olugbemiga Ojo Allu Clinton Aigbavboa; Patience Tunji-Olayeni)</p> <p>(UJ; Auchi Polytechnic; Auchi Nigeria; Covenant University)</p> <p>Evolving Construction Safety Management: Integrating Wearable Technologies with Business and Economic Insights</p>	<p>Akinradewo Opeoluwa (UFS)</p> <p>Benefits of Implementing 5th Generation Wireless Network in the South African Construction Industry</p>	<p>Zakari Mustapha; (Thomas Abilgah; William Morena Nkomo; Benjamin Boahene Akomah) (Cape Coat Technical University Cape Coast Ghana; UJ)</p> <p>Evaluation of Benefits and Constraint Factors of Modern Methods of Construction Technology</p>	<p>Nomputumo Ngesimani (Walter Sisulu University)</p> <p>Virtual Learning Platforms for Inclusive Education Rural South African Universities: A perspective of the lecturers</p>



13H15 – 14H00 | LUNCH BREAK

PLENARY SESSION

Time Slot	Activity	Speaker
14H00 – 15H00	Climate change and sustainable construction – can the built environment practitioner reposition?	Prof EM Mwanaumo University of Zambia Director R&D

VENUE A

Prof Emmanuel Adinyira | Session Moderator

BREAKAWAY SESSION TWO

SUSTAINABLE BUILT ENVIRONMENT

15H00 – 15H15	15H15 – 15H30	15H30 – 15H45	15H45 – 16H00
<p>Themba Mashiyane (Eskom)</p> <p>Business Innovative Application of 3D Ash Concrete Printing in Construction as a Sustainable Material</p>	<p>S.N.A.Davis; AB Marful; AA Opoku (Kwame Nkrumah University of Science and Technology) Komasi GHANA)</p> <p>An Assessment of The Sustainability of Hotels in Ghana: The Case of Kumasi</p>	<p>Veliswa Ngalwa (Walter Sisulu University)</p> <p>Assessing community involvement strategy to enhance the maintenance of school facilities in the Eastern Cape Province, South Africa</p>	<p>M. M. Baccah; (A.B Marful; NKB Marfo-Yiadom; S. Peprah) (Kwame Nkrumah University of Science and Technology)</p> <p>Biomimicry-Inspired Housing Models for Resilient Communities in Peri-Urban Ghana</p>



VENUE B

Mr M Phesa | Session Moderator

QUALITY AND SAFETY IN ENGINEERING & BUILT ENVIRONMENT

15H00 – 15H15

Thandeka Monnanyana
(University of Johannesburg)

IoT-based technologies adoption benefits for enhanced health and safety management in the South African Built Environment

15H15 – 15H30

Matilda Freda Marful
(University)

Prevention through Design: A Quality Management catalyst for the future of the Built Environment in Africa

15H30 – 15H45

Brookman Asare
(Walter Sisulu University)

Systematic review of the influence of culture on construction health and safety knowledge transfer

15H45 – 16H00

Matilda Freda Marful
(Kwame Nkrumah University of Science and Technology)

Using Quality Management Systems to Enhance Safety in Resource-Constrained Construction: Effective Risk Mitigation for the Bottom of the Pyramid

VENUE C

Dr P Ncube | Session Moderator

DIGITALIZATION AND EMERGING TECHNOLOGIES IN ENGINEERING AND BUILT ENVIRONMENT

15H00 – 15H15

David Ojimaajo Ebiloma;
Olajumoke Olatunbosun; Clinton Ohis Aigbavboa
(Federal University of Technology Akure Nigeria; UJ)

Evaluating the Barriers to Implementing Digital Technologies for the Maintenance of Facilities in Nigerian Higher Institutions

15H15 – 15H30

Hashe Vuyo
(Walter Sisulu University)

Design of a hydraulic scissor roof panel stillage

15H30 – 15H45

Mayowa Adedapo Ogungbe
(University of Johannesburg)

Digitalisation in the Construction Industry: A Scientometric Analysis of Associated Risks

15H45 – 16H00

Sandile Mhlungu;
Bogolo Ntombela, Murendeni Liphadzi
(Takoradi Technical University, UJ, WSU, Cape Coast Technical University Ghana)

Enhancing Construction Management and Architectural Collaboration through Digital Technologies

VENUE D

Dr S Zwane | Session Moderator

ENGINEERING AND BUILT ENVIRONMENT EDUCATION AND TRAINING

15H00 – 15H15

Liphadzi, M
(University of Johannesburg)

Utilisation of Construction Digital Tools in South African Institutions of Higher Learning

15H15 – 15H30

Hashe Vuyo
(University of South Africa)

Investigation on Industrial Boiler Tube Failures: A Company Case Study

15H30 – 15H45

Zekeliswa Binza
(Walter Sisulu University)

Strength and Durability of Concrete with Fresh Water and Seawater Blends

15H45 – 16H00

Somiah, M.K;
WD Thwala; MDH Zebilila; J Bentil; C Aigbavboa
(Takoradi Technical University, UJ, WSU, Cape Coast Technical University Ghana)

Towards the Adoption of Intelligent Transportation Systems in Ghana: An Assessment of The Knowledge Level of Fresh Graduates in Civil Engineering and Related Programs at The Bachelor Level



16H00 | END OF DAY & AFTERNOON TEA 



DAY 3: 08 July 2025 | 07h30 – 16h15

CONFERENCE PROGRAMME

Programme Director: Dr Mpume Mkhize | UJ Director Transformation

Time Slot	Topic	Speaker
07h30–08h45	Registration	
08h45–08h50	Health & Safety	Ms Z Ntsabo
08h55–09h10	Prayer – Benediction	WSU Faculty Member
09h10–09h30	Purpose of Engagement and Introduction of the Vice-Chancellor	Prof DW Thwala WSU Executive Dean FEBEIT
09h30–10h00	Welcoming of delegates and Deputy Minister	Prof RS Songca WSU VC & Principal
10h00–11h00	Rational from the Conference Partner	Dr Msizi Myeza CBE CEO
	Keynote Address by the Deputy Minister of Public Works and Infrastructure	Hon. Sihle Zikalala (MP) DM of PWI



11H00 – 11H30 | TEA BREAK

11h30 – 12h00	Guest Speaker: The evolving role of quantity surveyors in the delivery of sustainable infrastructure	Mr A Quphe President SACQSP	
---------------	--	-------------------------------	--

BREAKAWAY SESSION ONE

VENUE A

Prof A Ikudayisi | Session Moderator

SUSTAINABLE BUILT ENVIRONMENT

12H00 – 12H15	12H15 – 12H30	12H30 – 12H45
<p>Zakari Mustapha (Cape Coast Technical University)</p> <p>Evaluation of Benefits and Constraint Factors of Modern Methods of Construction Technology</p>	<p>Gabriel Nani; Prosper Badi; Justice Williams; Mohammed Siitah Raaj Yerinuma; Frempong Eno Adjoa Skyibea</p> <p>(Kwame Nkrumah University of Science and Technology Ghana)</p> <p>Exploring the Adoption of Shipping Containers for Modular Housing as an Eco-friendly Sustainable Construction in Ghana</p>	<p>Prof. Frank D.K. Fugar; Sabastina Opuka-Brafi; Anita O. Adade-Boateng; Naa Adjeley A.M. Doamekpor</p> <p>(Kwame Nkrumah University of Science and Technology Kumasi Ghana)</p> <p>Exploring The Current Extent of Awareness of Green Human Resource Management Practices Within the Ghanaian Construction Industry</p>

VENUE B

Dr J Lukose | Session Moderator

SUSTAINABLE BUILT ENVIRONMENT

12H00 – 12H15	12H15 – 12H30	12H30 – 12H45
<p>Anesu Sithole (University of Zimbabwe)</p> <p>Towards adopting sustainable construction in South Africa</p>	<p>Somiah, M.K.</p> <p>(Walter Sisulu University & University of Johannesburg)</p> <p>Towards Sustainability in Concrete Production in Ghana: Ascertaining the Chemical Composition of Eggshell Powder (ESP) From Locally Available Eggs</p>	<p>Mark Pim-Wusu (Walter Sisulu University)</p> <p>Unveiling Current Practices of the Internet of Things Towards Sustainability in the Building Construction Industry</p>

BREAKAWAY SESSION ONE



VENUE C

Ms B Ntombela | Session Moderator

DIGITALIZATION AND EMERGING TECHNOLOGIES IN ENGINEERING AND BUILT ENVIRONMENT

12H00 – 12H15

Aliu Ukpoireghe;
Ukpoireghe Ibadayo Aliu; Misheck
Musaigwa; Clinton Aigbavboa;
Patience Tunji-Olayeni

(UJ; Auchu Polytechnic Auchu Nigeria;
Covenant University Otta Nigeria)

**Harnessing Wearable Technologies
for Climate Change Resilience: A
Multidisciplinary Approach to
Biological and Economic Adaptation**

12H15 – 12H30

Blessing Odianosen Okosun;
Samuel Friday Ayeace; Inyass Ibrahim
(Federal University of Technology Minna)

**Impact of the Fourth Industrial Revolution on
Project Management Capabilities in the
Nigerian Construction Industry**

12H30 – 12H45

IAOLANG GIFT LAOLANG;
Claudia Loggia

(UKZN)

**Integrating Digital Technologies for
Sustainable Housing Infrastructure Delivery.
A Systematic Review**

VENUE D

Prof K Sibanda | Session Moderator

DIGITALIZATION AND EMERGING TECHNOLOGIES IN ENGINEERING AND BUILT ENVIRONMENT

12H00 – 12H15

Alice Ogunlolu;
Blessing Okosun; Choma Precious
Ekwenani

(Coventry University; Federak
Ybuversity of Tecnology, Minna;
aBaze University, Abuja)

**Readiness Assessment of
Construction Professionals in
Adopting 5th Industrial Revolution
Technologies**

12H15 – 12H30

Tholang David Nena
(University of Johannesburg)

**The Transformation of South African Traditional
Cities to Smart Cities: Challenges and
Prospects**

12H30 – 12H45

Rotondwa Benevolence Nemakhavhani
(CUT)

**From classrooms to communities: Advancing
sustainability in the built environment
through education**

VENUE E

Dr V Kumar | Session Moderator

SUSTAINABLE BUILT ENVIRONMENT AND DIGITALISATION

12H00 – 12H15

Alice Ogunlolu;
Blessing Okosun; Choma Precious
Ekwenani

(Coventry University; Federak
Ybuversity of Tecnology, Minna;
aBaze University, Abuja)

**Readiness Assessment of
Construction Professionals in
Adopting 5th Industrial Revolution
Technologies**

12H15 – 12H30

Sibongile Zwane;
Letlama Emmanuel Kunyane; Ramolokwane
Violin Maboa; Raeesah Gangat

(University of the Witwatersrand)

**Evaluating The Challenges of Implementing 3D
Printing in South Africa's Construction Industry**

12H30 – 12H45

Babatunde F. Ogunbayo
(University of Johannesburg)

**Validating Factors Influencing Policy
Attribute in the Maintenance of Educational
Buildings in Developing Economies**

PLENARY SESSION

PANEL DISCUSSION | 12h20 - 13h30

TOPIC: DRIVING GREEN INFRASTRUCTURE THROUGH PUBLIC POLICY AND PROCUREMENT

Moderator: Ms Amelia Mtshali | CBE Chairperson

Time Slot	Discussants:
12h20 - 13h30	<ul style="list-style-type: none"> Mr Authur Quphe (President SACQSP) Mr Lufuno Ratsiku (President SACPCMP) Mr Charles Nduku (President SACAP) Prof E Bamfo-Agyei (Cape Coast Technical University, Ghana)

13H30 - 14H30 | LUNCHBREAK



BREAKAWAY SESSION TWO

VENUE A

Prof C Aigbavboa | Session Moderator

SUSTAINABLE BUILT ENVIRONMENT

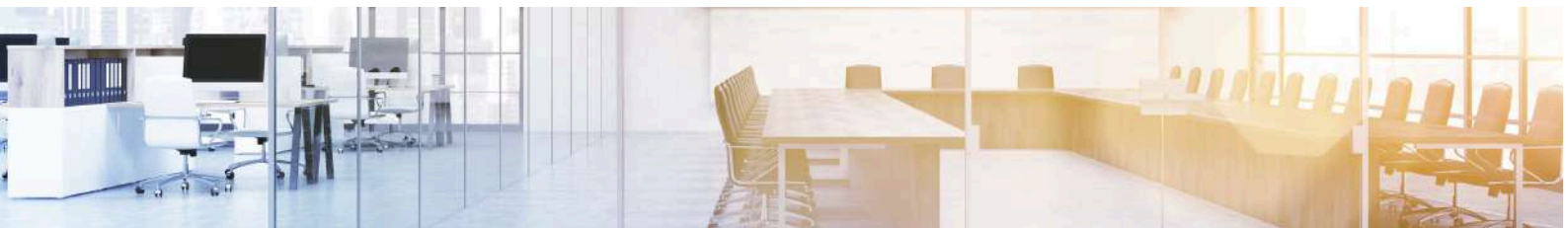
14H30 - 14H45	14H45 - 15H00	15H00 - 15H15	15H15 - 15H30	15H30 - 15H45
<p>Julius Egbobawaye (University of Johannesburg)</p> <p>Factors Affecting the Use of Remote Working by the Construction Sector in South Africa</p>	<p>Douglas Aghimien (University of Johannesburg)</p> <p>Implementing Mycelium as a Nature-Based Solution for Sustainable Construction in South Africa</p>	<p>Lusanda Paulina Sokufudumala (Walter Sisulu University)</p> <p>Improving the South African Construction Industry Resilience</p>	<p>Emmanuel Adinyira; Samuel Aklashie; Kofi Agyekum (UJ; Kwame Nkrumah University Kumasi Ghana)</p> <p>Key Drivers for Efficient Cost Management of Green Building Projects: Empirical Evidence from Ghana</p>	<p>Douglas Aghimien (Walter Sisulu University)</p> <p>Nature-based solution a veritable approach for the sustainability of South Africa's built environment</p>

VENUE B

Dr Ndou | Session Moderator

SUSTAINABLE BUILT ENVIRONMENT

14H30 - 14H45	14H45 - 15H00	15H00 - 15H15	15H15 - 15H30	15H30 - 15H45
<p>Adu Gyamfi Timothy; WD Thwala; Mark Pimwusu (Accra Technical University)</p> <p>Unveiling Determinants of Health and Safety Challenges in Utilising Drones for the Building Construction Sector. A Literature Review</p>	<p>Mbulelo Phesa (Walter Sisulu University)</p> <p>Use of Sewer Water as an Alternative in Concrete Production in Water Scarce Regions of South Africa</p>	<p>C.N.N. Ntung (Tshwane University of Technology & Walter Sisulu University)</p> <p>Use of silica fume to enhance rubberized concrete properties when rubber crumbs are used as partial substitution for fine aggregates</p>	<p>Chijioke Emere (Walter Sisulu University)</p> <p>Mapping A Decade of Global Trends in Sustainable Building Construction Adoption Research: A Bibliometric Analysis</p>	<p>Olatunji Joseph Oladiran (Benue State University, Nigeria)</p> <p>Outcomes of Current Waste Management Practices in Construction Projects in Nigeria</p>





VENUE C

Mr Mpeta | Session Moderator

DIGITALIZATION AND EMERGING TECHNOLOGIES IN ENGINEERING AND BUILT ENVIRONMENT

14H30 – 14H45	14H45 – 15H00	15H00 – 15H15	15H15 – 15H30	15H30 – 15H45
<p>Douglas Aghimien (University of Johannesburg)</p> <p>Unearthing digital technologies driving construction circularity for carbon neutrality in South Africa</p>	<p>Olusegun Aanuoluwapo Oguntona (Walter Sisulu University)</p> <p>Unveiling the Critical Role of Artificial Intelligence (AI) Tools in Promoting Positive Mental Health among Construction Workers</p>	<p>Steadyman Chikumba (UNISA)</p> <p>Recycled plastic waste and their application in sustainable construction materials</p>	<p>Bogolo Ntombela & Nokulunga Mashwama (Tshwane University of Technology; Walter Sisulu University)</p> <p>Enhancing Quantity Surveying Education through Peer Learning for improved work readiness: A Case Study Analysis</p>	<p>Ornella Tambwe, Clinton Aigbavboa, Kudzai Mbowa, Opeoluwa Akinradewo (University of Johannesburg & University of Free State)</p> <p>Promoting Effective Data Management through Business Intelligence and Analytics Technologies in the Construction Industry</p>

VENUE D

Dr M Nkomo | Session Moderator

DIGITALIZATION AND EMERGING TECHNOLOGIES IN ENGINEERING AND BUILT ENVIRONMENT

14H30 – 14H45	14H45 – 15H00	15H00 – 15H15	15H15 – 15H30	15H30 – 15H45
<p>Motebang Matsela</p> <p>Strategies for Enhancing the Upgrading of Informal Settlements Programme (UISP) Over the Next Decade in Johannesburg, South Africa</p>	<p>Olatunji Joseph Oladiran</p> <p>Sustainable Concrete Production from Industrial Waste</p>	<p>David Ojimaajo Ebiloma; Ayomide Emmanuel Alade; Clinton Ohis Aligbavboa (UJ; Federal University of Technology Akure Nigeria)</p> <p>The Adoption Strategies of 3D Printing Technology for Improved Project Delivery in the Nigerian Construction Industry</p>	<p>Annelma Bishop (University of the Free State)</p> <p>The Effect of COVID-19 on Construction Projects in the Eastern Cape, South Africa</p>	<p>Rotondwa Benevolence Nemakhavhani (CUT)</p> <p>Advancing Sustainable Construction: A Case Study Review of Moladi's Affordable and Climate-resilient Housing</p>



TEA BREAK

Time Slot	Topic	Speaker
16H00 – 16H10	Announcements and closure	Prof DW Thwala WSU Executive Dean FEBEIT



After a day of insight and innovation, unwind with us at the Gala Dinner — where meaningful connections and lasting partnerships begin

GALA DINNER GALORE

18h00 – 18h30

Arrival and Entertainment

18h30 – 18h45

*Future-ready graduates
CBE Chief Executive Officer,
Dr Msizi Myeza*

18h45 – 19h00

*Walter Sisulu University Executive Dean FEBEIT,
Prof Didibhuku Thwala*

19h00 – 19h15

***Message of Support:**
Higher Education and Training,
Representative*

19h15 – 19h30

***Remarks:**
Walter Sisulu University
Vice-Chancellor & Principal,
Professor Rushiella Songca.*

19h30–20h15

***Keynote Address**
Deputy Minister of Public Works
and Infrastructure
Hon Sihle Zikalaka (MP)*

20H15– 21H00

*Dinner
Networking Networking*



EAST LONDON
INTERNATIONAL
CONVENTION CENTRE
SOUTH AFRICA

Time Slot	Topic	Speaker
09H00–09H15	Welcome Address	Prof. Feza WSU DVC Research & Internationalisation Mr Lufuno Ratsiku (President SACPCMP) Dr Coralie Van Rensen CSIR
09H15–10H00	Guest speaker: Addressing the South African Infrastructure Backlog through Public Private Partnership	
10H00–10H45	Living Laboratories: Where Buildings and Science Meet	



10H45 - 11H15 | TEA BREAK

BREAKAWAY SESSION

VENUE A

Prof Emmanuel Bamfo-Agyei | Session Moderator

SUSTAINABLE BUILT ENVIRONMENT

11H15 – 11H30	11H30 – 11H45	11H45 – 12H00	12H00 – 12H15
<p>Morena William Nkomo (University of Johannesburg)</p> <p>Challenges in sustainable construction practices and its impact on project management efficiency: A Case study</p>	<p>Julius Egbobawaye</p> <p>University of Johannesburg</p> <p>Factors Affecting the Use of Remote Working by the Construction Sector in South Africa</p>	<p>Aliu Ukpoireghe</p> <p>(University of Johannesburg, Covenant University & Auchi Polytechnic)</p> <p>Evolving Construction Safety Management: Integrating Wearable Technologies with Business and Economic Insights</p>	<p>Xelani Sigauke Mberi</p> <p>Broad-Rage Climate Data-Driven Technological Gap: Climate Data Primacy for Sustainable Construction in SADC Built Environment</p>

VENUE B

Prof Ramobodu | Session Moderator

DIGITALIZATION AND EMERGING TECHNOLOGIES IN ENGINEERING AND BUILT ENVIRONMENT

11H15 – 11H30	11H30 – 11H45	11H45 – 12H00	12H00 – 12H15
<p>Mbulelo Phesa (Walter Sisulu University)</p> <p>A Data-Driven Investigation into Parking Management: A Case Study of Ndola Central Business District</p>	<p>Siyabulela Dywili; Clinton Aigbavboa; Didi Thwala & Siyabulela Liwani</p> <p>(Walter Sisulu University & Liwani Consulting)</p> <p>Assessing Barriers to Digital Transformation in the Built Environment: A Study of Professionals in Rural South Africa</p>	<p>Athi-enkosi Mavukwana; Litha Yapi; Julia Molto Berenguer (UJ; University of Pretoria; University Alicante Spain)</p> <p>Evaluating the effect of different types of dried Automotive Paint Sludge as cement-based composite</p>	<p>Kwena Maphoto</p> <p>A Review of Implementation Challenges in Sustainable Housing Delivery: The Case of South Africa’s Integrated Residential Development Programme (IRDP)</p>

VENUE C

Dr A Opeoluwa | Session Moderator

SUSTAINABILITY

11H15 – 11H30	11H30 – 11H45	11H45 – 12H00	12H00 – 12H15
<p>Nwako Burabari; (Saudat Oluwakemi Ajijola; Joseph A Fadamiro) (Babalola University)</p> <p>A System Review on the effectiveness of Community based flood Adaptation in rivers state</p>	<p>Sibanda Melissa Lubelihle</p> <p>Advancing Inclusion: The Role of Socio-Economic Transformation in Tackling Energy Poverty in South Africa’s Housing and Built Environment</p>	<p>Hashe Vuyo</p> <p>(University of South Africa)</p> <p>Investigation on Industrial Boiler Tube Failures: A Company Case Study</p>	<p>Ze Gyang Zakka (Walter Sisulu University)</p> <p>Performance of Modified Expanded Polystyrene Beads and Rice Husk Ash Lightweight Concrete under Elevated Temperatures</p>

Time Slot	Topic	Speakers
12H15-13H00	Reflections & Way forward	Prof DW Thwala WSU Executive Dean FEBEIT & Dr M Myeza CBE CEO



LUNCH BREAK AND DEPARTURES



1ST International Conference on Sustainable Construction and the Built Environment (ICSCBE)

6-9 July 2025 | 8H00 TO 17H00

Theme: The Future of the Built Environment in Developing Countries

Venue: WSU Buffalo City Campus: Conference Potsdam Site

THANKS FOR YOUR PARTICIPATION!!!!!!

1st International Conference on Sustainable Construction in the Built Environment (ICSCBE)



The envisaged conference will specifically focus on current areas of research and development in the Built Environment in line with the CBE Research Agenda and outcomes, showcasing Walter Sisulu University's (WSU) capacity and strengths. It is expected that Conference attendees will include high level delegates from government, private sector organisations and companies, academic institutions, developmental organisations, state-owned entities, national utilities, non-profit organisations, and labour organisations. A student focused event leading up to the conference is planned with topics to be covered in line with those identified during the last workshop.

In line with the CBE's Transformation agenda and drive towards establishing a national footprint, the Conference will be hosted at, and in collaboration with the Walter Sisulu University (WSU) located within the Eastern Cape Province - WSU has a footprint of about 1,000 square kilometres across the urban and rural areas of the region.

The Walter Sisulu University offers diploma courses in the built environment and is currently in the process of expanding its curriculum to also cater for 3-year degree courses and post-graduate studies. Because WSU is at this critical developmental stage of expanding its course offerings in the Built Environment professions, the Council for the Built Environment sought it fit to include this institution as a formal partner in hosting the first National Built Environment Conference.

THEMATIC AREAS

The following research themes were identified during the workshop. These themes will be elaborated on and expanded by the Scientific Committee appointed by Walter Sisulu University:



OBJECTIVES



- To provide a national platform where students, academics and key high-level stakeholders and role players can be informed of and discuss topical issues in the South African Built Environment, specifically centred around the CBE research agenda themes and academic expertise of Walter Sisulu University academics; for academics, students and industry leaders to develop solutions to current challenges in the South African Built Environment unique to the Eastern Cape context.



- To support the Walter Sisulu University in developing and showcasing their institutional academic gravitas



- To generate new knowledge for advancing the sector, specifically in the province of the Eastern Cape.



- Contribute to the Council for the Built Environment's Transformation agenda and increase the CBE national footprint by hosting the conference in the Eastern Cape and in partnership with a Historically Disadvantaged Institution (HDI)

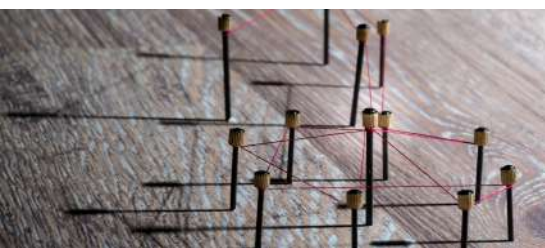


TARGET AUDIENCE

- Deputy Minister of Public Works and Infrastructure
- Deputy Minister of Higher Education and Training
- The MEC for Public Works, Infrastructure and Human Settlements
- The Council for the Built Environment under the leadership of the delegated Council Member and the CEO
- The Walter Sisulu University under the leadership of the Vice Chancellor and Executive Dean of the Built Environment and Information Technology
- The Department of Public Works and Infrastructure and its entities under the leadership of the Director General and CEOs
- The Eastern Cape Department of Public Works and Infrastructure under the leadership of the Head of Department
- The President of the South African Council for the Project and Construction Management Professions
- The President and Registrar of the South African Council for the Quantity Surveying Profession
- Deans, Professors and Representatives from Tertiary Institutions with Built Environment Faculties and Departments
- Built Environment Professionals and Voluntary Associations
- The Academia and Research community at large
- Local Government, Traditional and Community leaders



An attendance of about 200 delegates is expected, comprising of the broader research and academia, captains of the built environment and construction industry, provincial and local government, public entities and client departments to create Foster dialogue on collaborative research and innovation to transform South Africa into a dynamic, inclusive, and sustainable built environment.



➤ Notable Dignitaries and Stakeholders RSVPd

- Deputy Minister of Public Works and Infrastructure
- Deputy Minister of Higher Education and Training to delegate representative
- The Eastern Cape MEC for Public Works, Infrastructure and Human Settlement
- Chairperson and CEO of the Council for the Built Environment
- President of the South African Council for the Project and Construction Management Professions
- President and Registrar of South African Council for the Quantity Surveying Profession
- The Head of Department and Delegates from the Eastern Cape Department of Public Works and Infrastructure
- Infrastructure Chief Executive Officer of the Council for the Built Environment
- Vice-Chancellor and Deputy Vice-Chancellors of Walter Sisulu University
- Executive Dean of the Faculty of Engineering, Built Environment and Information Technology at WSU
- Chief Shared Services Officer of the Council for the Built Environment
- Head of Department at the Eastern Cape Department of Public Works and Infrastructure
- Professor at the Birmingham City University in the United Kingdom
- Chief Executive Officer of the Council for Scientific and Industrial Research
- Research & Strategy Development Analyst of the Sustainability Institute
- Professors from Built Environment Tertiary Institutions: UJ, Wits, CUT, TUT, VUT and DUT



SOME OF THE KEY CONFIRMATIONS RECORDED



VENUES AND SETUP



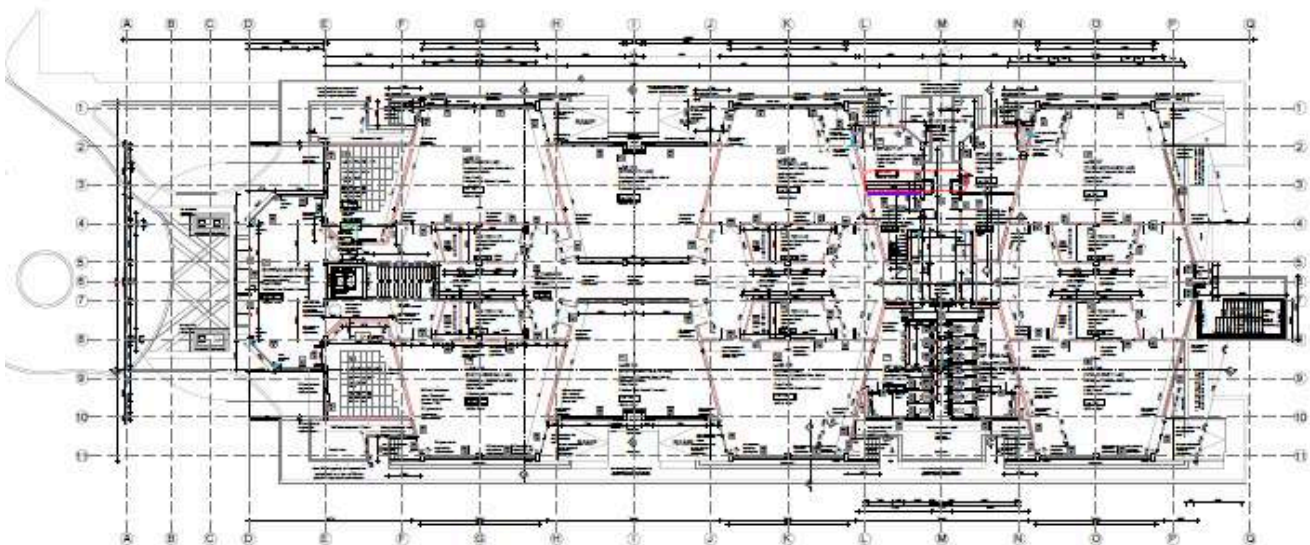
➤ WSU Buffalo City Campus

Potsdam Campus, East London, 5200

✈️ 46.6 Km from King Phalo Airport, East London

📅 6 - 9 July 2025

WSU Potsdam Technopark Engineering Building (Ground Floor Plan)



VENUES AND SETUP

East London International Convention Centre

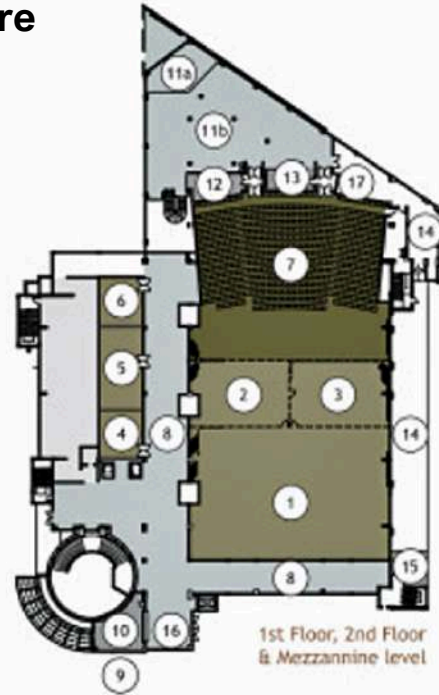
Esplanade, 22 Esplanade St, Quigney, East London, 5201

37.2 Km from WSU Buffalo City Campus, East London

8 July 2025 from 18h00



East London International Convention Centre Gala Dinner East London International Convention Centre



IDENTIFIED MEDIA AND POSSIBLE INTERVIEWS

Print Media



- Newspapers based in Port Elizabeth (The Herald) and East London (The Daily Dispatch).
- Published by Arena Holdings (Sunday Times, Business Day, Sowetan)



Broadcast Media

- Formerly known as Bay TV
- Local Eastern Cape TV station



Radio Media

- SABC public broadcaster with broad reach in the province
- Local Radio Stations



CONFERENCE SCIENTIFIC COMMITTEE

Conference Scientific Chairman

Professor Wellington Didibhuku Thwala

Editors

Prof Wellington Didibhuku Thwala

Prof Xolile Nokulunga Mashwama

Dr Courage Matobobo

Prof Pat Mfanelo Ntsobi

Scientific Committee Members

- Prof Xolile Nokulunga Mashwama, Walter Sisulu University, RSA
- Prof Erastus Mwanaumo, University of Zambia, Zambia
- Prof Nicholas Chileshe, University of South Australia, Australia
- Prof Clinton Aigbvaboa, University of Johannesburg, RSA
- Prof Joseph N. Mojekwu, University of Lagos, Nigeria
- Prof Lawrence Atepor, Cape Coast Technical University, Ghana
- Prof Amevi Acakpovi, Accra Technical University, Ghana
- Prof Emmanuel Bamfo-Agyei, Cape Coast Technical University, Ghana
- Dr Gabriel Nani, Kwame Nkrumah University of Science and Technology, Ghana
- Dr Murendeneni Liphadzi, University of Johannesburg, RSA
- Dr Ehrhard Visser, Council for Built Environment (CBE), RSA
- Dr Vinod Kumar, Walter Sisulu University, RSA
- Dr Jose Lukose, Walter Sisulu University, RSA
- Dr Akinola Ikudayisi, Walter Sisulu University, RSA
- Prof David Edwards, Birmingham City University, UK
- Prof Obuku Ejohwomu, University of Manchester, UK
- Prof Callistus Tengen, Bogatanga Technical University, Ghana
- Prof Bankole Awuzie, University of Johannesburg, RSA
- Dr Andrew Ebekozi, Auchu Polytechnic, Nigeria
- Dr Sampa Chisumbe, Lusaka Apex Medical University, Zambia
- Prof Olusegun Oguntona, Walter Sisulu University, RSA
- Dr Temidayo Osunsami, Edinburg Napier University, UK
- Dr Matthew Ikuabe, University of Johannesburg, RSA
- Dr Babatunde Ogunbayo, University of Johannesburg, RSA
- Dr Ernest Kissi, Kwame Nkrumah University of Science and Technology, Ghana
- Dr Titus Kwofie, Kwame Nkrumah University of Science and Technology, Ghana
- Dr John Aliu, University of Georgia, USA
- Prof John Smallwood, Nelson Mandela University, RSA
- Dr Simon Ofori Ametepey, Koforidua Technical University, Ghana
- Dr Vuyo Terrence Hashe, Walter Sisulu University,

WSU AND CBE LOCAL ORGANISING COMMITTEE

- | | | |
|--------------------------------|------------------------------|----------------------------|
| • Prof Xolile Mashwama (Chair) | • Ms Zimasa Ngqubekile | • Mr Siyabulela Mzendana |
| • Dr Ernhard Visser | • Mrs Mathabo Hendricks | • Mr Ovid Ndondo |
| • Mr Marcus Mroko | • Mrs Gwen Lindani | • Mr Yanga Ziwela |
| • Ms Nosizwe Mokoena | • Mr Hillary Mgazi | • Mrs Babalwa Panyaza |
| • Mr Zamile Mpeta | • Mrs Akhona Luzipo | • Mr Sive Finini |
| • Dr Vinod Kumar | • Ms Siyasanga Vitshima | • Mrs Tina Bikitsha |
| • Dr Mbunga Rose | • Mr Kgwase Qhali | • Mr Fundisile Socam |
| • Dr Vuyo Terrence Hashe | • Mr Nkonzo Lushaba | • Mr Khaka Gobingca |
| • Mr Asandile Zothe | • Mr Mxolisi Magewu | • Mrs Yonela Tukwayo |
| • Mr Mxolisi Jaza | • Ms Zintle Balfour | • Ms Ziyanda Ntsabo |
| • Ms Andisiwe Dumako | • Ms Fundiswa Nciza | • Ms Zukiswa Kulu |
| • Ms Nomkhitha Luke | • Mrs Gwendolyn Ndyawe | • Ms Lizelle Van Schalkwyk |
| • Mr Mbulelo Phesa | • Mrs Veliswa Ngalwa | • Ms Sinah Ndala |
| • Dr Courage Matobobo | • Ms Queen Nokubonga Masango | • Mr Martin Mabitsela |
| • Mr Prince Ncube | • Mrs Linda Mynhardt | • Ms Lulu Dube |
| • Ms Bulelwa Pahlana | • Mr Thando Cezula | • Mr Percy Mamulingi |
| • Ms Lusanda Sokufudumala | | • Mr Zolisa Vuso |
| • Mr Mlamuli Ngidi | | • Ms Sisipho Qwenga |



1ST

International Conference on Sustainable Construction and the Built Environment (ICSCBE)

6-9 July 2025 | 8H00 TO 17H00

Theme: The Future of the Built Environment in Developing Countries

Venue: WSU Buffalo City Campus:
Conference Potsdam Campus

**THANK
YOU!**

For joining us at the 1st WSU and CBE International Conference on Sustainable Construction in the Built Environment (ICSCBE). Your presence, insights, and contributions will help make the event a resounding success

